



Office: 'Bapu Nagar', Station Road, Halol-389350. (Mo : 91 7574847547 PradipSinh)  
Factory: Plot No: 2/49,GIDC, Phase-3, Nr .HNG Glass, Halol-389350, Dist. Panchmahals, Gujarat, INDIA

## **PARAS PROCESS TECHNOLOGIES**

### **ACTIVITIES**

Materials handling equipment  
Storage and discharge equipment  
Sieving and straining equipment  
Size reduction equipment  
Process equipment  
Pneumatic transport systems  
Process plants



## SCREW FEEDER

Screw conveyors are very suitable for being adopted as a device to control the volume of materials flow from the bottom of bins, hoppers, storage silos etc. Screw conveyors are most widely used to convey bulk materials from one part of a process to another, horizontal screw conveyors are available in wide range of sizes, lengths, configurations and material of constructions.

Screw Feeder :

- ❖ Screw Conveyors
- ❖ Horizontal Screw Feeder
- ❖ Inclined Screw Feeder
- ❖ Vertical Screw Feeder
- ❖ U – Type Screw Conveyors
- ❖ Screw Feeder With Valve



## **BELT CONVEYORS**



Belt conveyor is a kind of conveying machine which transport materials from one place to another place continuously. Belt conveyor machine consist of conveyor frame, conveyor belt, conveyor pulley, conveyor rollers, tension devices, driving units and other components etc. Belt conveyor system can transport materials in bulk and bagged, such as stone, sand, coal, concrete, cement, gravel, fertilizer, mineral ore, limestone, coke, sawdust, wood chip, bulk material, grain, corn flakes, carbon black etc.

The material being transported can travel either horizontally, inclined or declined, depending on the type of conveyor used. They have a vast range of applications in small-scale industries and also are of low maintenance.

Belt Conveyors :

- ❖ Horizontal Belt Conveyors
- ❖ Cleated Belt Conveyors
- ❖ Inclined Belt Conveyors
- ❖ Curved Conveyors

## **ROLLER CONVEYORS**



Roller Conveyor is a series of rollers supported in frame over which objects are advanced manually, by gravity or by power. These are easy to install and can be customized any shape and take any number of curves to form a flexible conveying.

Roller Conveyors are optimized for transporting a wide variety of crates, boxes, polybags and pallets. A version in freewheel or electrical controlled roller conveyor gives you flexibility in layout, application and budget. This way you can efficiently use this type of conveyor in every phase of your product flow.

Roller Conveyors can be customized as per the requirement of our customers and are available in various sizes, lengths and dimensions. supreme quality in manufacturing Roller Conveyors. The rollers built by us are highly durable in nature.



## **RIBBON BLENDER**

The Ribbon Blender mixes free-flowing raw materials within a U-Shaped trough. A horizontal agitator consisting of precisely pitched inner and outer helical ribbons moves materials in a well-balanced axial and radial flow pattern. High quality ribbon blenders feature tightly controlled clearances between the trough surfaces and agitator tips. Good design and expert fabrication ensure fast repeatable mixing, easy clean-up, low maintenance and long service life.

Ribbon blender consists of a U-shaped horizontal container containing a double helical ribbon agitator that rotates within. The agitator's shaft is positioned in the center of the trough and has welded spokes on which the helical ribbons are welded. The gap between the ribbons outer edge and the internal wall of the container ranges from 3 to 6 mm depending on the application. Internal and external ribbon spirals on the agitator shaft located with the blender container. The ribbon agitator is powered by drive system comprised of a motor, gearbox and couplings.



## **HOPPERS**



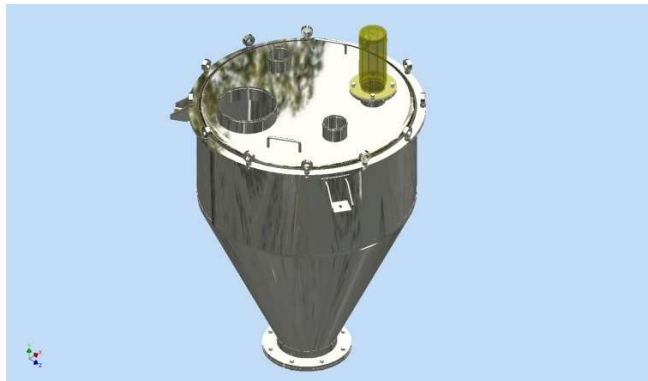
Hopper is widely used for solid material feeding purpose as well as for bulk storage of the material.



We currently offer a range of capacity within the range to suit your specific application.

We manufacture stainless steel, mild steel hoppers for different industrial processes. Symmetric and asymmetric hoppers with shut-off butterfly valves in nominal diameters up to 300mm make the complete operation dust-free and waste-free. Various cones and discharge aids, from rotary hooks to pneumatic vibrators, contribute to a problem-free emptying process. The beauty of it is that the hoppers is only fitted when and where need. This saves space and is highly cost-effective.

Hoppers are specially developed for a vast range of applications like Uniform Feeding System, Mining, Aggregate, Industrial Minerals, Powder feeding, Pharmaceutical and Chemical industries. BUCKET



## Z Bucket Elevators





## **TABLE FEEDER**

SIZE: TF 690, TF 900, TF 1200 & TF 1500



## **BULK LOADER & SACK TIP STATION**



## **BIN ACTIVATOR**

SIZE: BA600, BA750, BA900, BA1200 & TF 1500



## Vertical Single Shaft and Twin Shaft Mixers -With / Without Refiners / Cutters

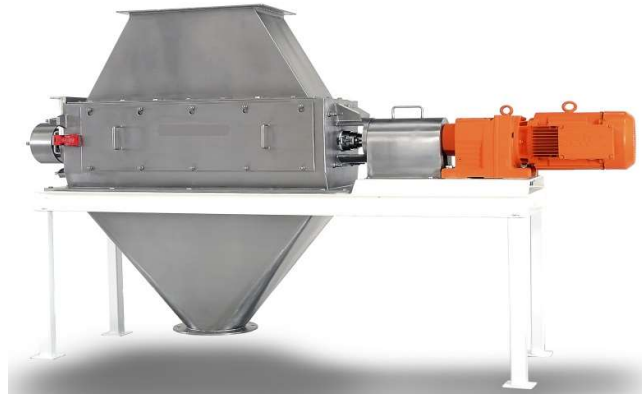


## Horizontal Mixer





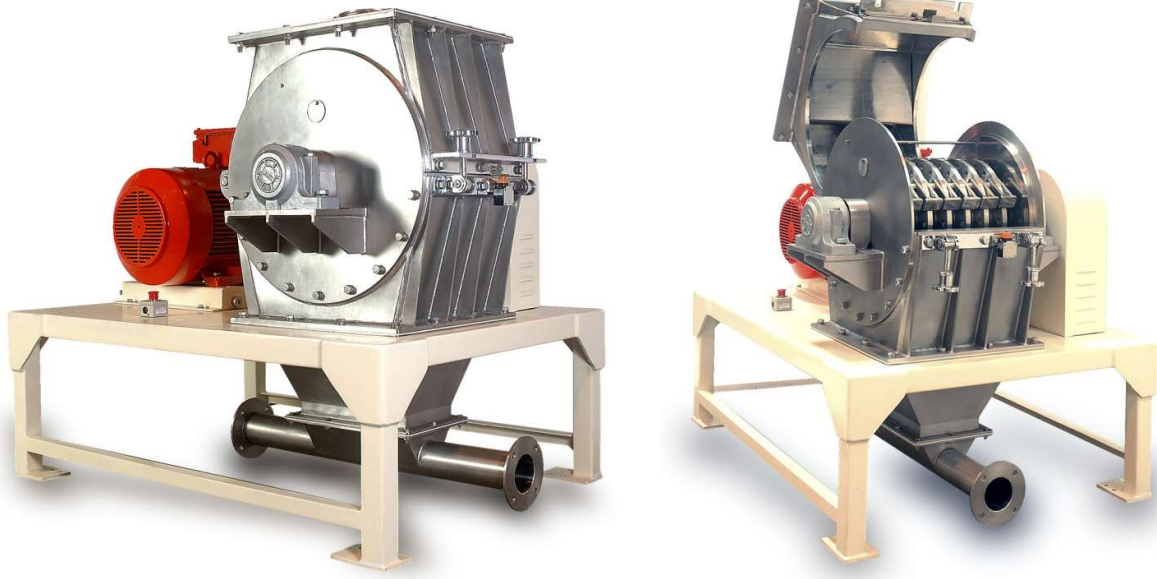
## Nibber



## Universal mill



## Hammer mill

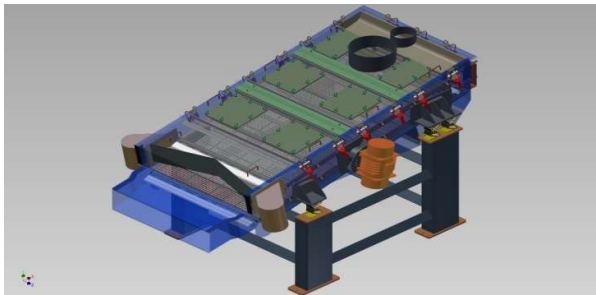
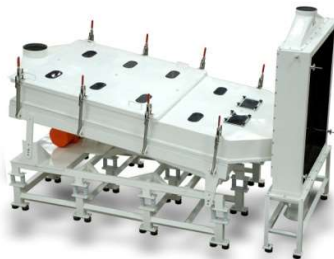


## Rotary Sifters & Inline Rotary Sifters





## **Destoners & Vibroscreens**



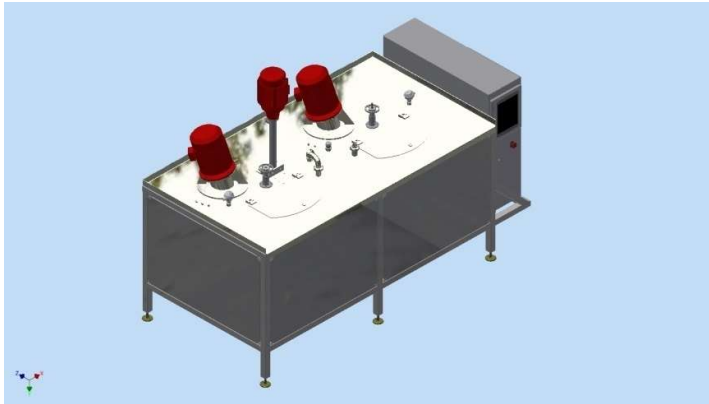
## **Vibro & Inline Vibro, High Vibration Vibro**



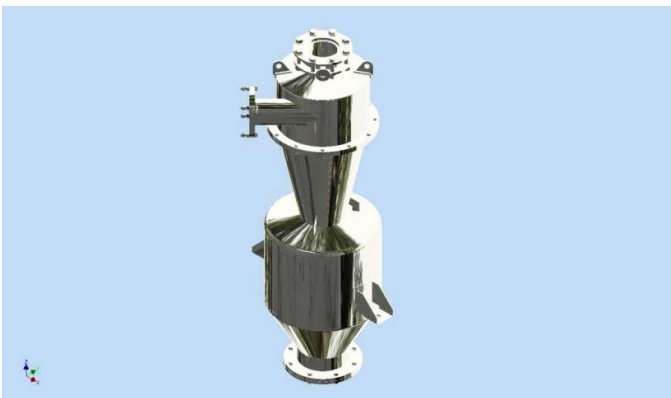




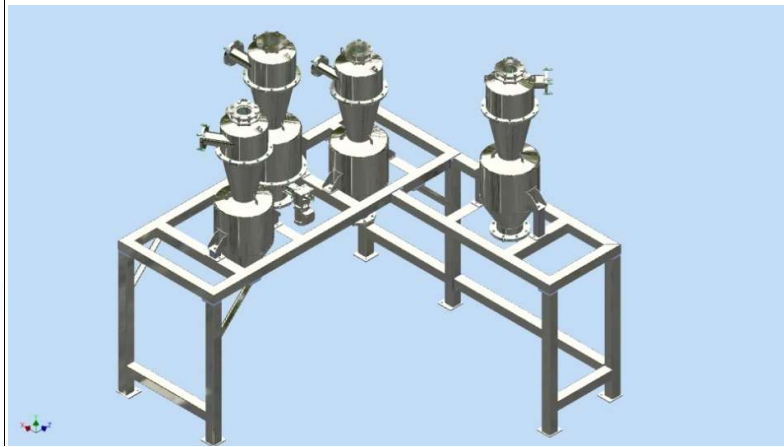
## **Process Tanks and Agitators**



## **Dust Collection Systems**



## **Cyclones & Automatic Reverse Jet Filters**



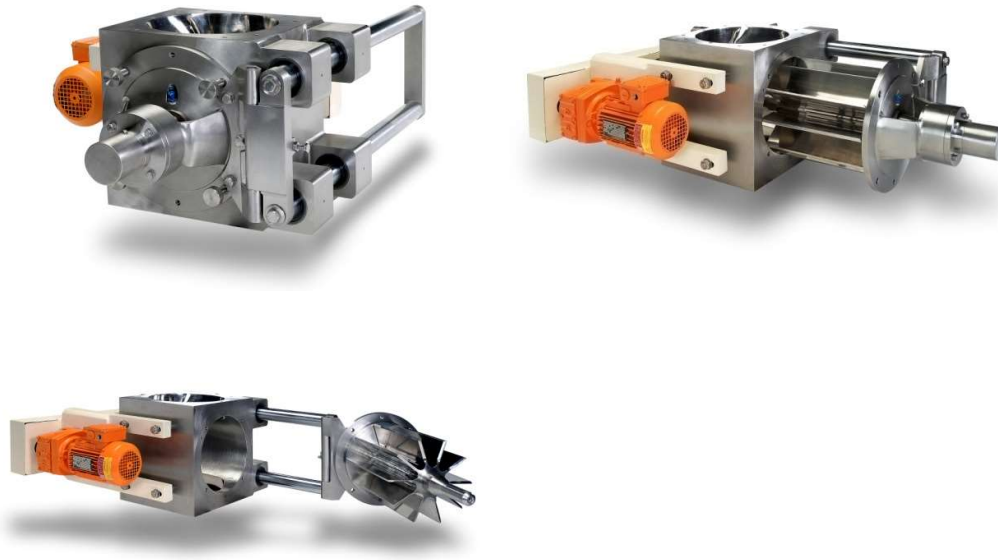
## Storage Silo



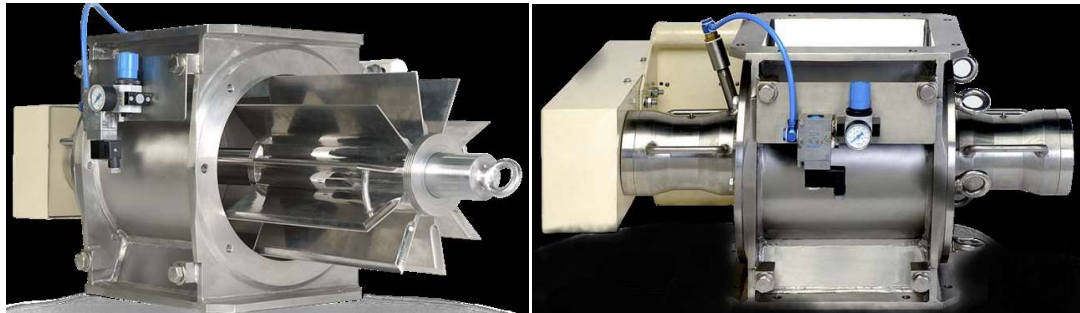
## IBC & Big Bag Emptying Stations



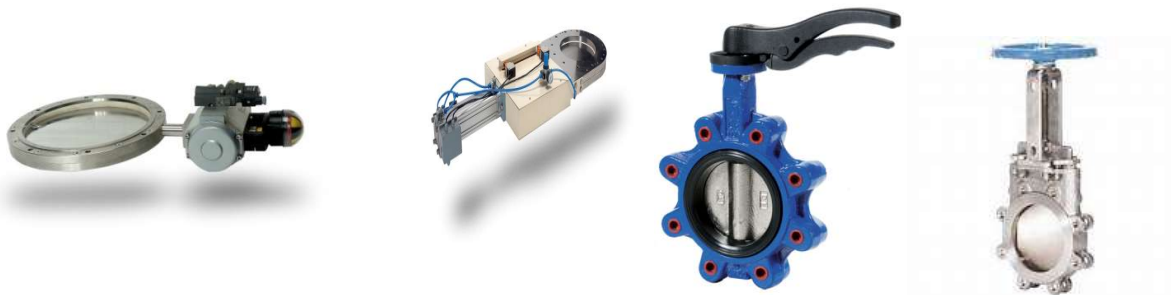
## Rotary Air Lock Valves –Slide Out



## Rotary Air Lock Valves –Quick Cleaning / Regular



## Pneumatically/Manual Operated Butterfly and Knife Gate Valves

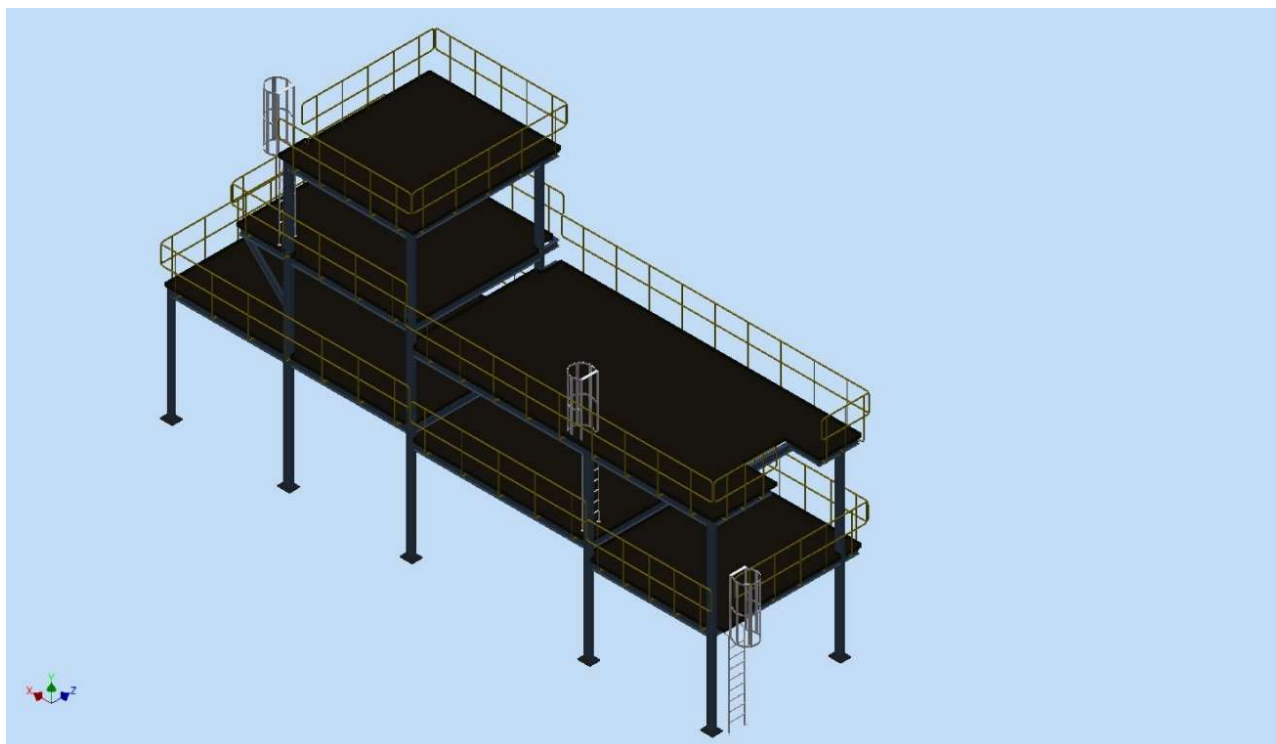




## Process Plant



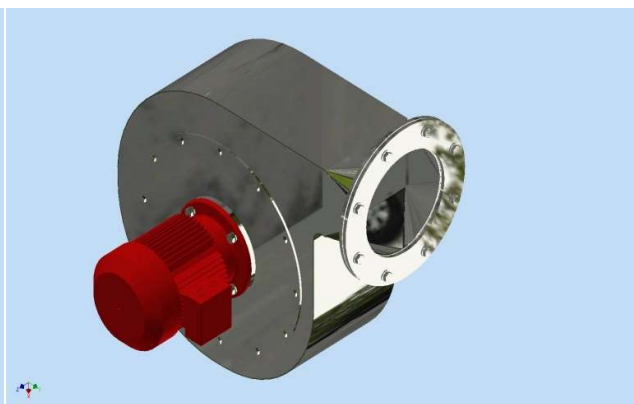
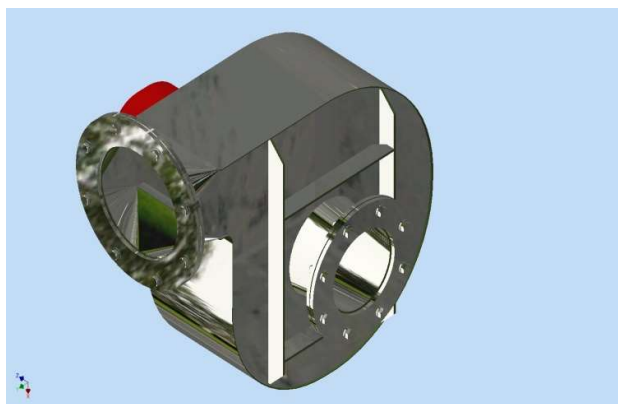
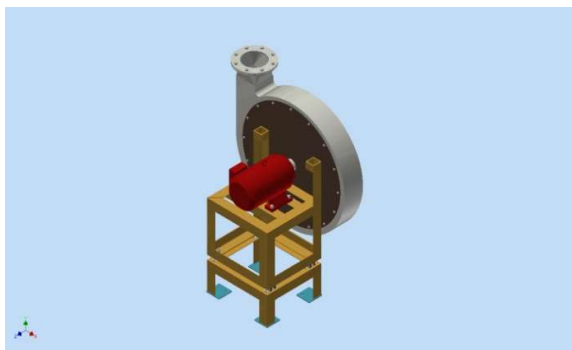
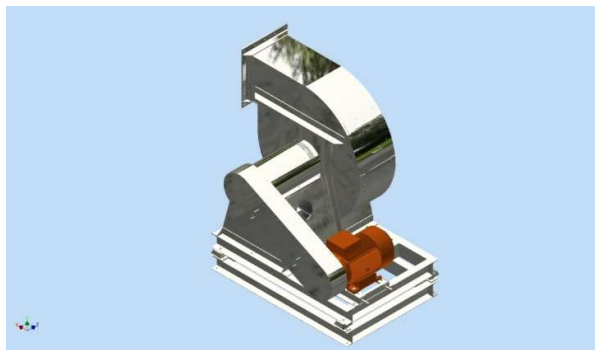
## Structure Platform



## Dust Extration System



## Centrifugal Fan



## Plant Accessories

### Magnet



Retainer, spring, Gasket, Rubber Ball, Rubber Bellow, Vibration Pad, Std Rind With Mesh, Sandwich Ring With Mesh, Base, Cassing, Lid, Transfer Chute, Underpan Deck, Perforated Sheet



## Why Paras Process Technologies

- Unique blend of design and build capabilities
- Technically sound, innovative yet practical solution
- Installation, on-site supervision, commissioning and training
- Detailed documentation
- On-going after sales support and parts availability
- Complete confidentiality
- Competitive price

## Why Paras Process Technologies For Career ?

- Interactive working environment
- Endless possibilities and flexibility in career.
- Continuous learning process for self development and career fulfillment.
- Wide product range and ability to develop new products.
- Fast augmentation on your capability.

### Key Clients:



# THANK YOU